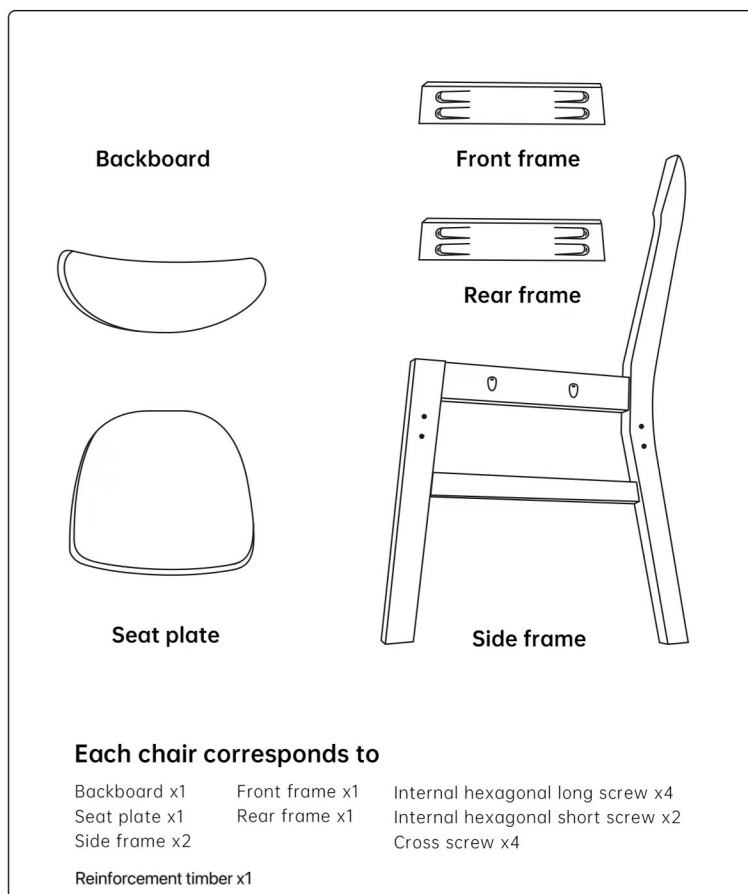


S i m p l e

Easy installation steps

01^{step}

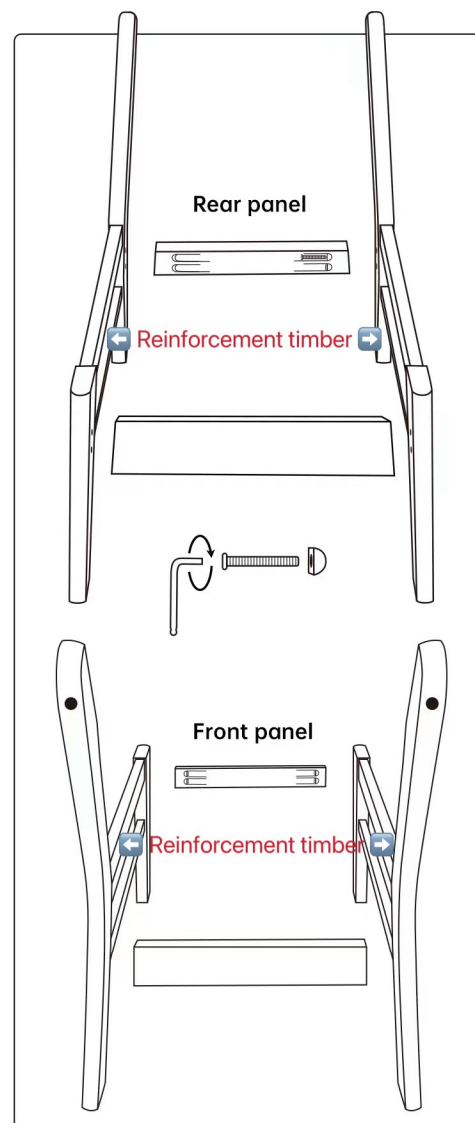
View Checklist



02^{step}

Installing edge plates

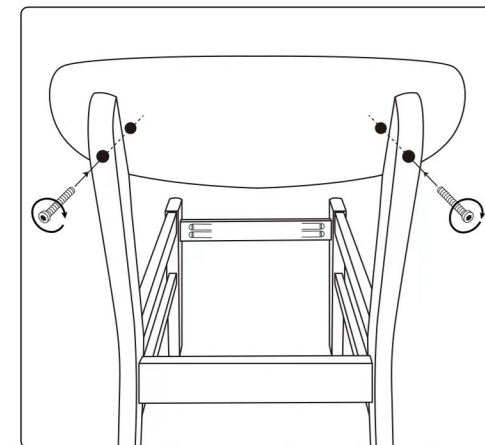
Using a hex wrench
Tighten the screw clockwise



03^{step}

Installing Backplane

Using a hex wrench, rotate the inner hexagonal screw clockwise and install it, then cover it with a cap.



Use the screws in the separate smaller parts pack.
Please ignore this if there is only one parts pack.

04^{step}

Installing seat plate

Use a Phillips screwdriver to tighten the Phillips screw clockwise.

